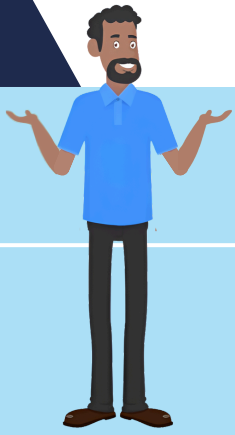


What is PSERS?



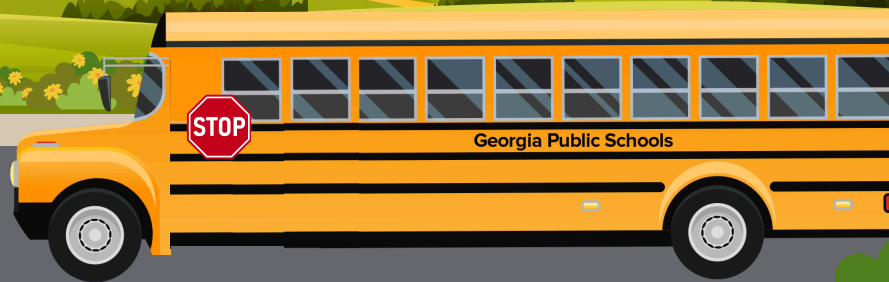
Public School Employees
Retirement System

Supplemental retirement benefit
for employees of Georgia public schools
who are not eligible for TRS

Benefit Multiplier
x
Years of Service
=
Maximum Plan Benefit

Lifetime
Monthly Benefit

In addition to other
retirement savings



Your Contributions: \$90 per year



Sign into your
account and
designate your
beneficiaries!

Retirement Eligibility:

- Normal: Age 65
- Early: Age 60
- Vested: 10 years of Creditable Service

